

Village Centers - Changes from Version 2.0

# Newton Centre

### Existing Zoning

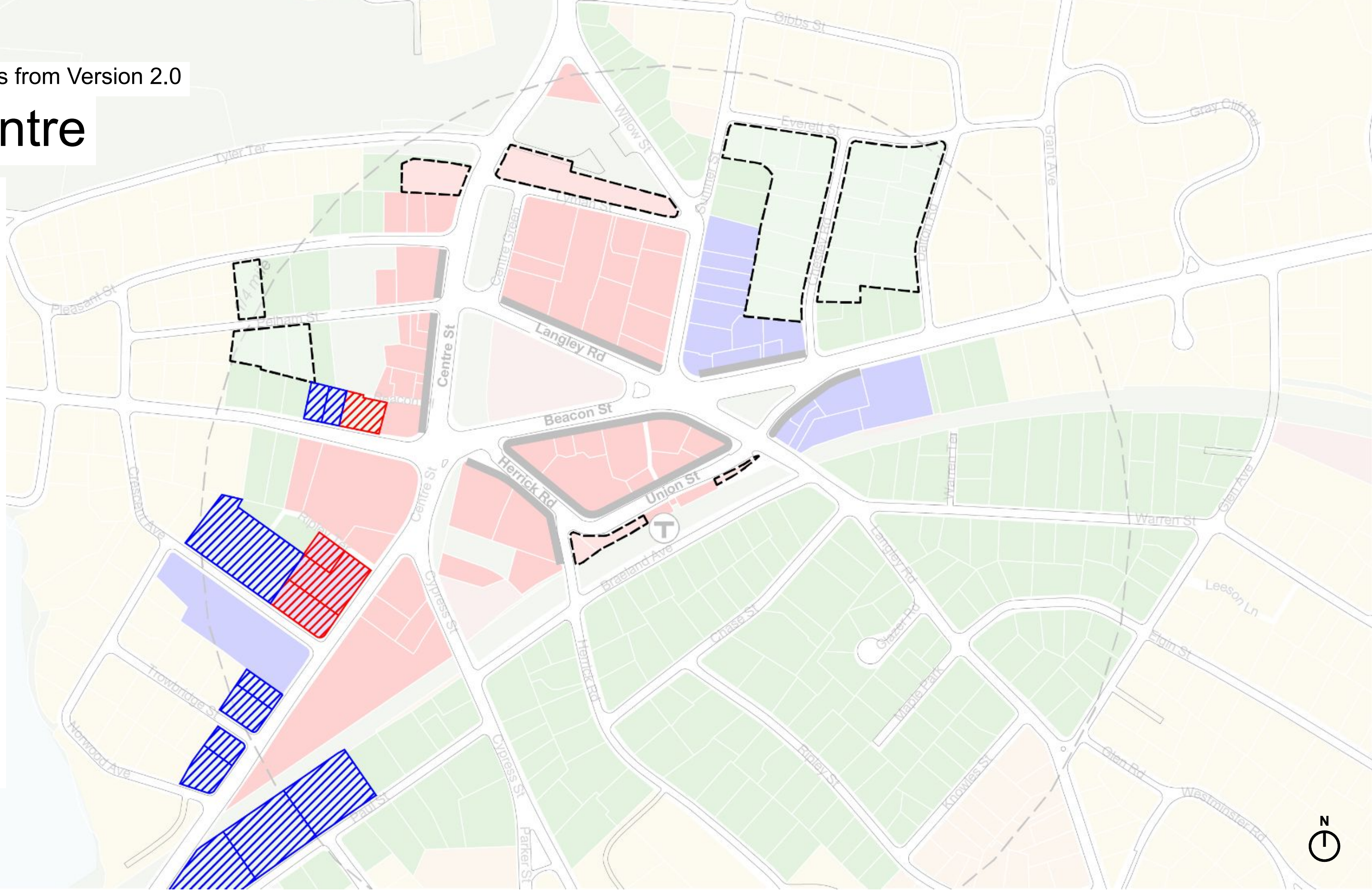
- Business (BU)
- Manufacturing (LM, M)
- Multi-Residence (MR)
- Single Residence (SR)
- Mixed Use (MU)
- Public Use & Open Space (PU, OS/R)

### Version 2.0 Zoning

- Village Center 3 (VC3)
- Village Center 2 (VC2)
- Village Center 1 (VC1)
- Multi-Residence Transit (MRT)
- Mixed-Use Required
- Historic District

### Version 3.0 Zoning

- Convert to VC3
- Convert to VC2
- Convert to MRT
- Remove from VCOD



Village Centers - Changes from Version 2.0

# Auburndale

### Existing Zoning

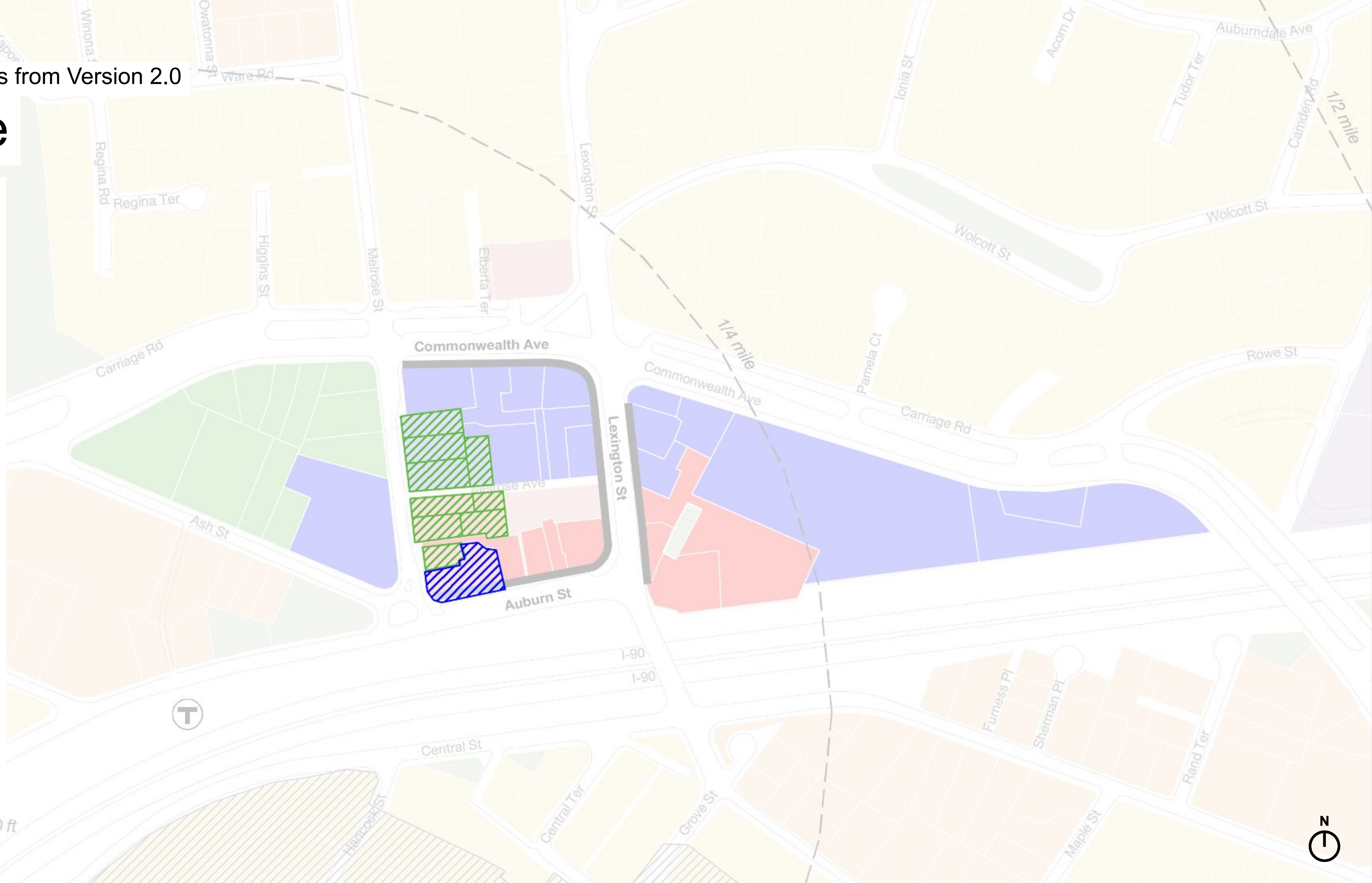
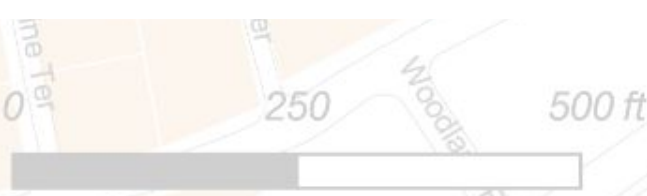
- Business (BU)
- Manufacturing (LM, M)
- Multi-Residence (MR)
- Single Residence (SR)
- Mixed Use (MU)
- Public Use & Open Space (PU, OS/R)

### Version 2.0 Zoning

- Village Center 3 (VC3)
- Village Center 2 (VC2)
- Village Center 1 (VC1)
- Multi-Residence Transit (MRT)
- Mixed-Use Required
- Historic District

### Version 3.0 Zoning

- Convert to VC3
- Convert to VC2
- Convert to MRT
- Remove from VCOD



Village Centers - Changes from Version 2.0

# West Newton

### Existing Zoning

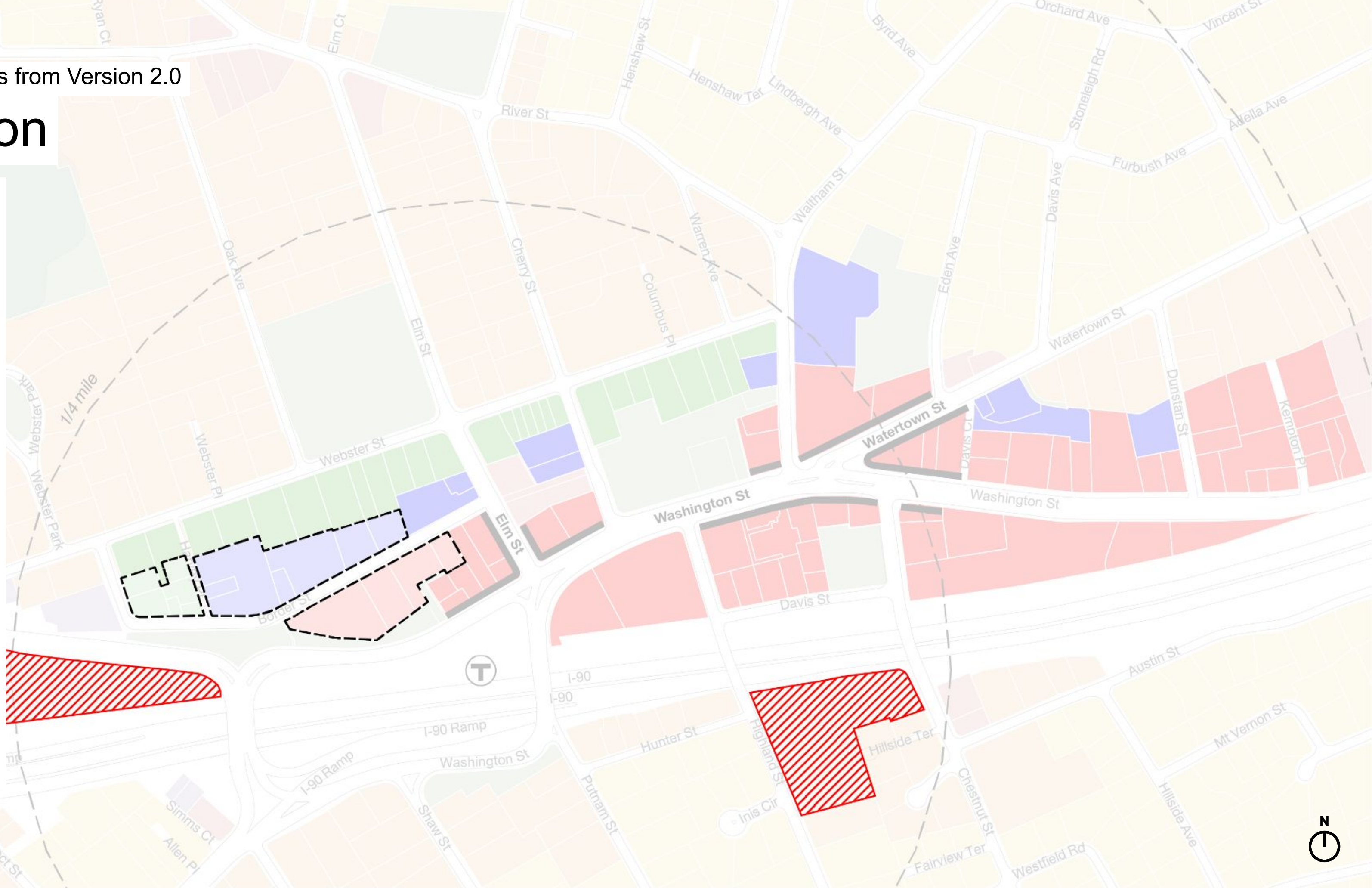
- Business (BU)
- Manufacturing (LM, M)
- Multi-Residence (MR)
- Single Residence (SR)
- Mixed Use (MU)
- Public Use & Open Space (PU, OS/R)

### Version 2.0 Zoning

- Village Center 3 (VC3)
- Village Center 2 (VC2)
- Village Center 1 (VC1)
- Multi-Residence Transit (MRT)
- Mixed-Use Required
- Historic District

### Version 3.0 Zoning

- Convert to VC3
- Convert to VC2
- Convert to MRT
- Remove from VCOD



Village Centers - Changes from Version 2.0

# Newtonville





### Existing Zoning

-  Business (BU)
-  Manufacturing (LM, M)
-  Multi-Residence (MR)
-  Single Residence (SR)
-  Mixed Use (MU)
-  Public Use & Open Space (PU, OS/R)

### Version 2.0 Zoning

-  Village Center 3 (VC3)
-  Village Center 2 (VC2)
-  Village Center 1 (VC1)
-  Multi-Residence Transit (MRT)
-  Mixed-Use Required
-  Historic District

### Version 3.0 Zoning

-  Convert to VC3
-  Convert to VC2
-  Convert to MRT
-  Remove from VCOD



Village Centers - Changes from Version 2.0

# Nonantum

### Existing Zoning

- Business (BU)
- Manufacturing (LM, M)
- Multi-Residence (MR)
- Single Residence (SR)
- Mixed Use (MU)
- Public Use & Open Space (PU, OS/R)

### Version 2.0 Zoning

- Village Center 3 (VC3)
- Village Center 2 (VC2)
- Village Center 1 (VC1)
- Multi-Residence Transit (MRT)
- Mixed-Use Required
- Historic District

### Version 3.0 Zoning

- Convert to VC3
- Convert to VC2
- Convert to MRT
- Remove from VCOD



Village Centers - Changes from Version 2.0

# Newton Corner

### Existing Zoning

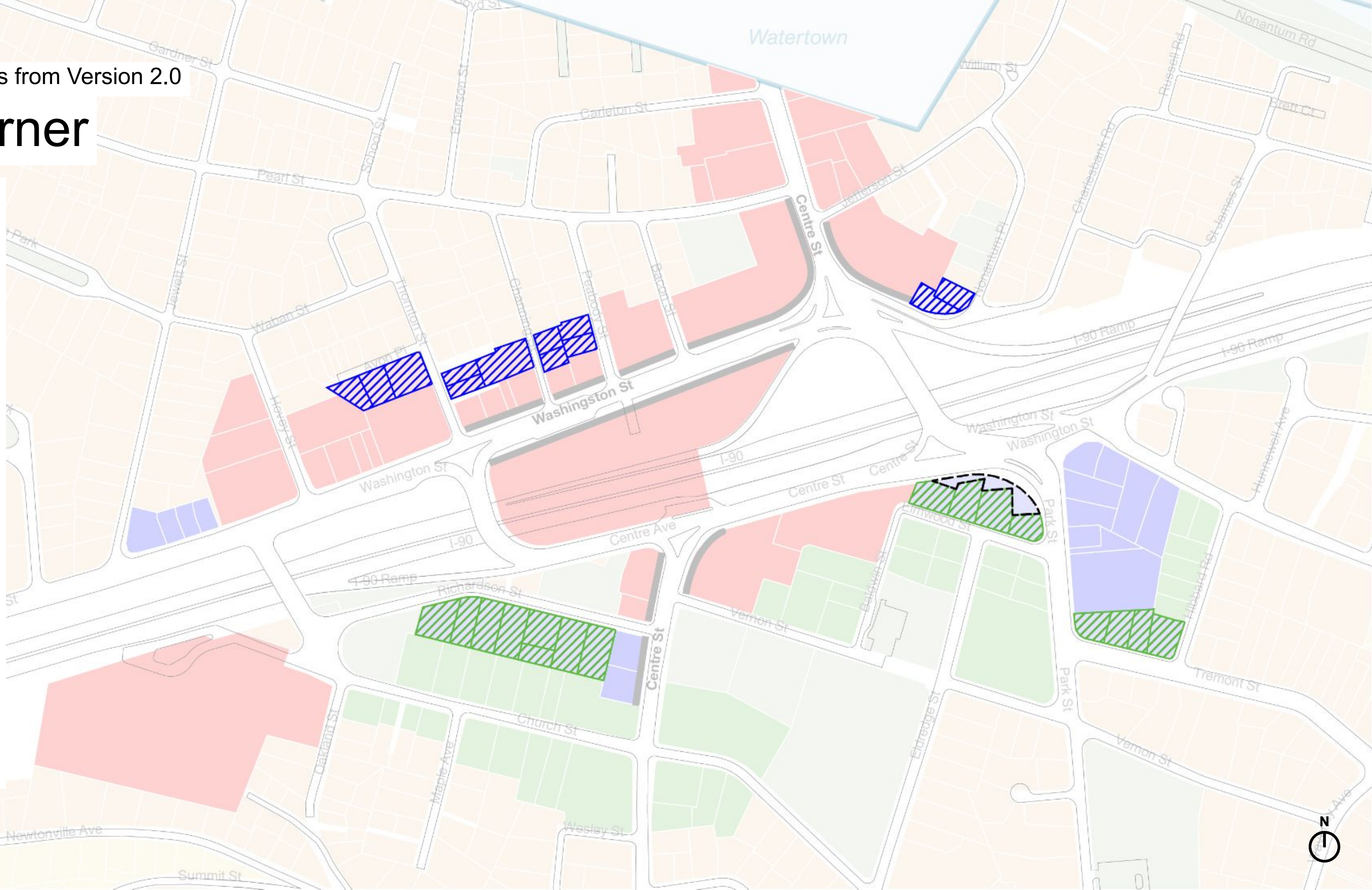
- Business (BU)
- Manufacturing (LM, M)
- Multi-Residence (MR)
- Single Residence (SR)
- Mixed Use (MU)
- Public Use & Open Space (PU, OS/R)

### Version 2.0 Zoning

- Village Center 3 (VC3)
- Village Center 2 (VC2)
- Village Center 1 (VC1)
- Multi-Residence Transit (MRT)
- Mixed-Use Required
- Historic District

### Version 3.0 Zoning

- Convert to VC3
- Convert to VC2
- Convert to MRT
- Remove from VCOD



Village Centers - Changes from Version 2.0

# Newton Lower Falls

### Existing Zoning

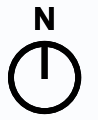
- Business (BU)
- Manufacturing (LM, M)
- Multi-Residence (MR)
- Single Residence (SR)
- Mixed Use (MU)
- Public Use & Open Space (PU, OS/R)

### Version 2.0 Zoning

- Village Center 3 (VC3)
- Village Center 2 (VC2)
- Village Center 1 (VC1)
- Multi-Residence Transit (MRT)
- Mixed-Use Required
- Historic District

### Version 3.0 Zoning

- Convert to VC3
- Convert to VC2
- Convert to MRT
- Remove from VCOD



Village Centers - Changes from Version 2.0

# Waban

### Existing Zoning

- Business (BU)
- Manufacturing (LM, M)
- Multi-Residence (MR)
- Single Residence (SR)
- Mixed Use (MU)
- Public Use & Open Space (PU, OS/R)

### Version 2.0 Zoning

- Village Center 3 (VC3)
- Village Center 2 (VC2)
- Village Center 1 (VC1)
- Multi-Residence Transit (MRT)
- Mixed-Use Required
- Historic District

### Version 3.0 Zoning

- Convert to VC3
- Convert to VC2
- Convert to MRT
- Remove from VCOD





Village Centers - Changes from Version 2.0

# Four Corners

### Existing Zoning

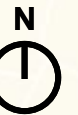
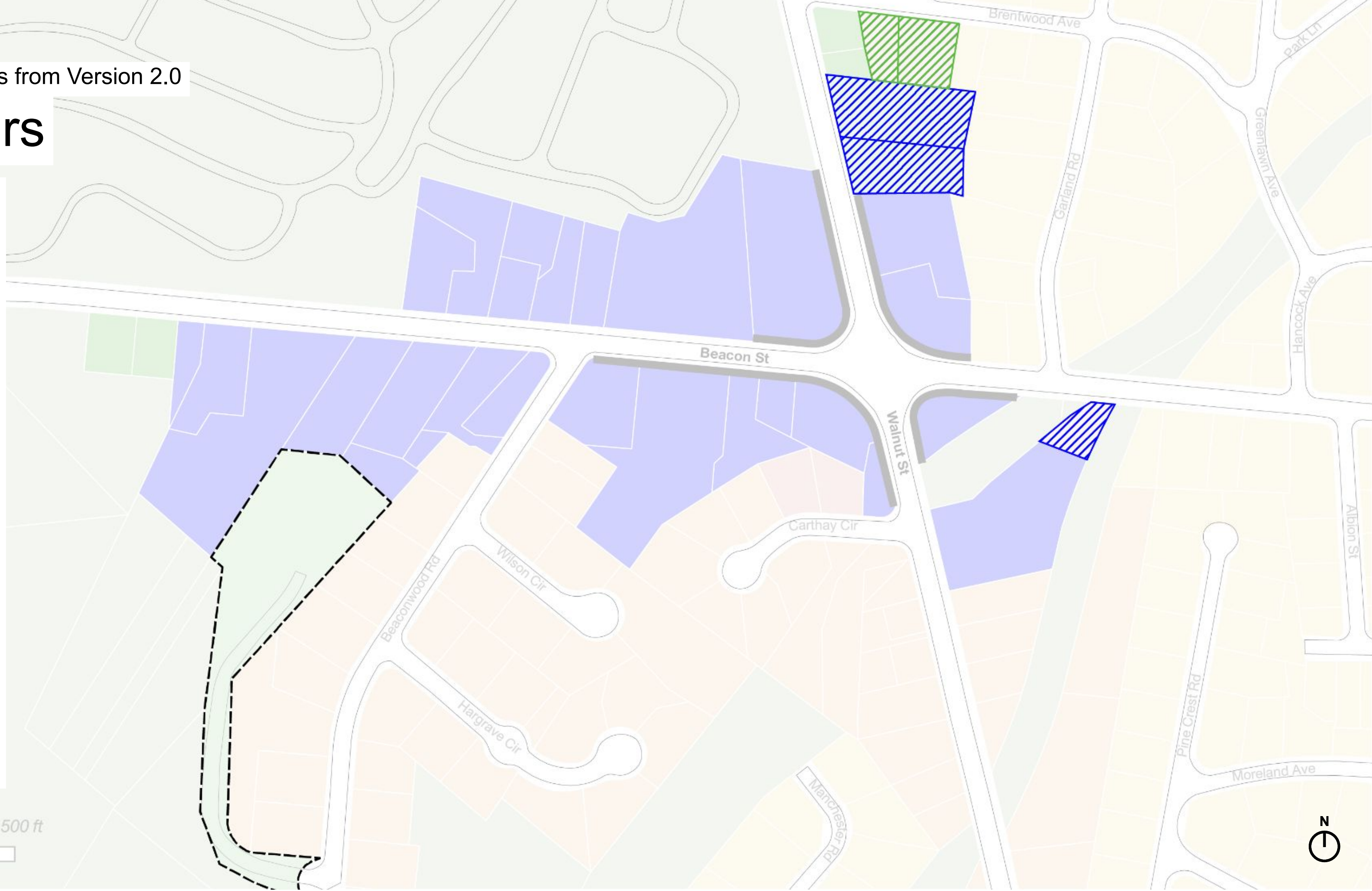
- Business (BU)
- Manufacturing (LM, M)
- Multi-Residence (MR)
- Single Residence (SR)
- Mixed Use (MU)
- Public Use & Open Space (PU, OS/R)

### Version 2.0 Zoning

- Village Center 3 (VC3)
- Village Center 2 (VC2)
- Village Center 1 (VC1)
- Multi-Residence Transit (MRT)
- Mixed-Use Required
- Historic District

### Version 3.0 Zoning

- Convert to VC3
- Convert to VC2
- Convert to MRT
- Remove from VCOD



Village Centers - Changes from Version 2.0

# Upper Falls (Pettee Square)

### Existing Zoning

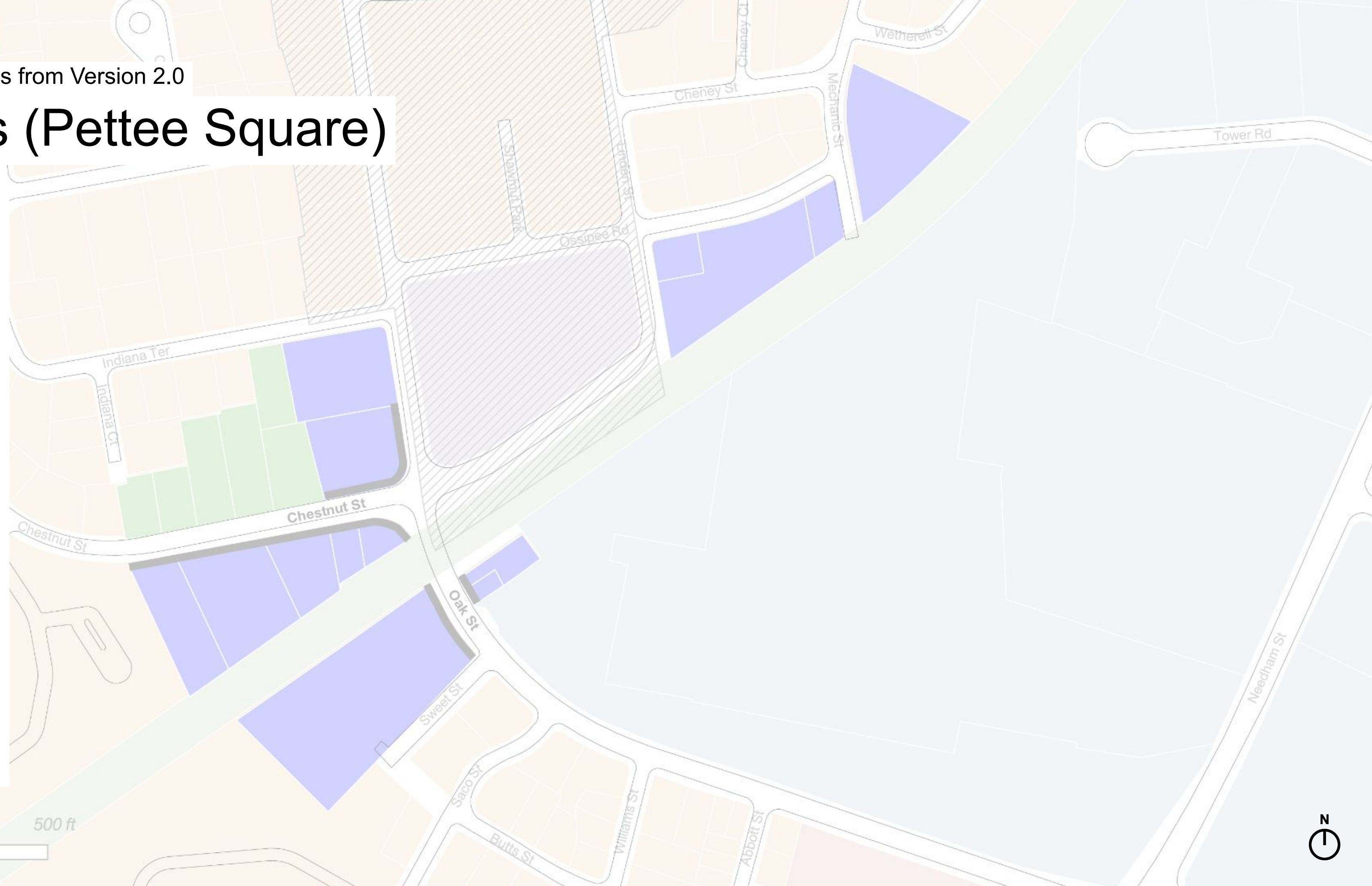
- Business (BU)
- Manufacturing (LM, M)
- Multi-Residence (MR)
- Single Residence (SR)
- Mixed Use (MU)
- Public Use & Open Space (PU, OS/R)

### Version 2.0 Zoning

- Village Center 3 (VC3)
- Village Center 2 (VC2)
- Village Center 1 (VC1)
- Multi-Residence Transit (MRT)
- Mixed-Use Required
- Historic District

### Version 3.0 Zoning

- Convert to VC3
- Convert to VC2
- Convert to MRT
- Remove from VCOD



Village Centers - Changes from Version 2.0

# Thompsonville

### Existing Zoning

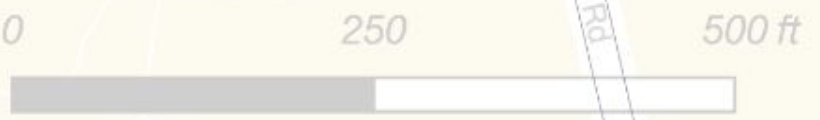
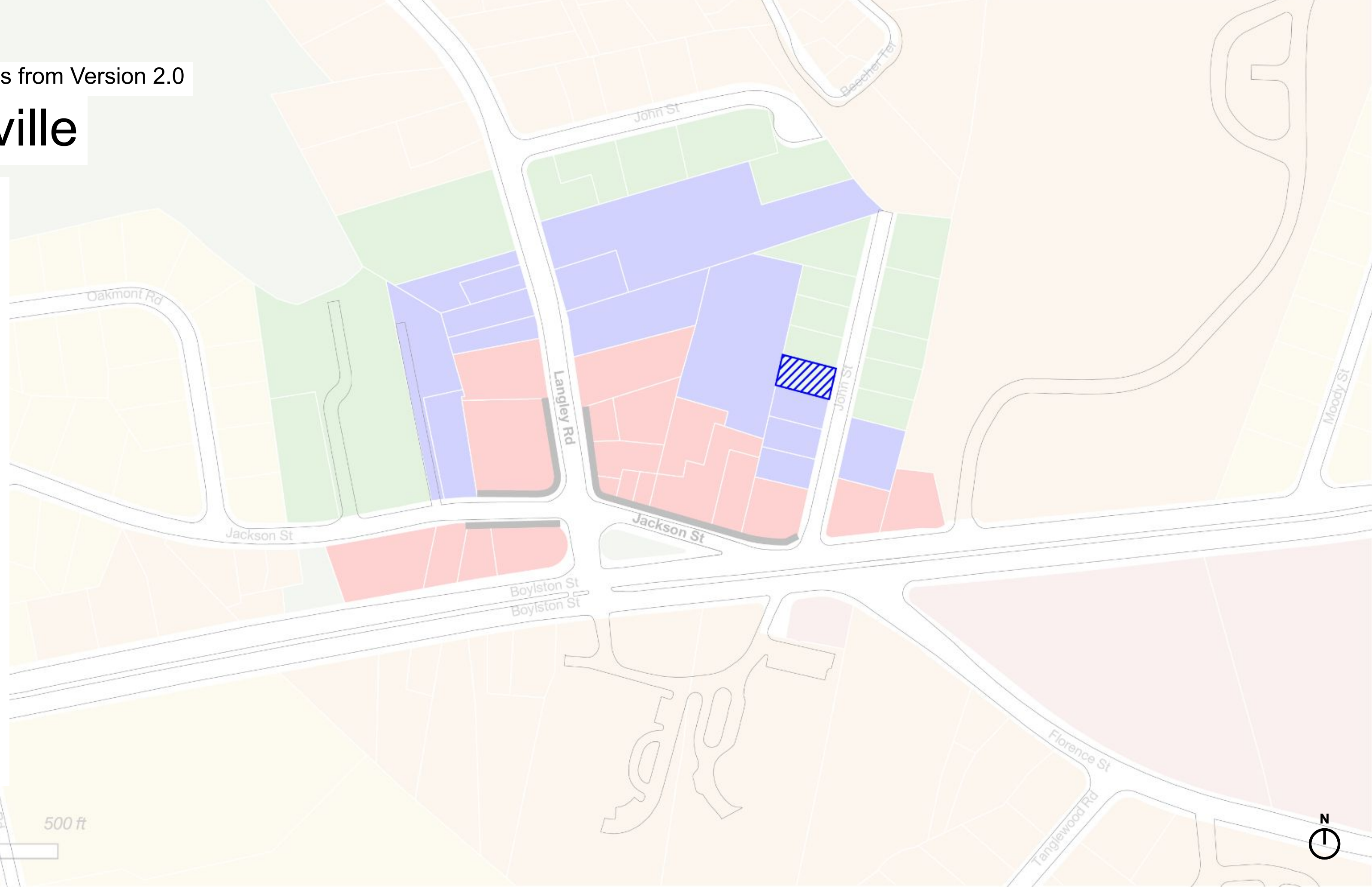
- Business (BU)
- Manufacturing (LM, M)
- Multi-Residence (MR)
- Single Residence (SR)
- Mixed Use (MU)
- Public Use & Open Space (PU, OS/R)

### Version 2.0 Zoning

- Village Center 3 (VC3)
- Village Center 2 (VC2)
- Village Center 1 (VC1)
- Multi-Residence Transit (MRT)
- Mixed-Use Required
- Historic District

### Version 3.0 Zoning

- Convert to VC3
- Convert to VC2
- Convert to MRT
- Remove from VCOD



Village Centers - Changes from Version 2.0

# Newton Highlands

### Existing Zoning

- Business (BU)
- Manufacturing (LM, M)
- Multi-Residence (MR)
- Single Residence (SR)
- Mixed Use (MU)
- Public Use & Open Space (PU, OS/R)

### Version 2.0 Zoning

- Village Center 3 (VC3)
- Village Center 2 (VC2)
- Village Center 1 (VC1)
- Multi-Residence Transit (MRT)
- Mixed-Use Required
- Historic District

### Version 3.0 Zoning

- Convert to VC3
- Convert to VC2
- Convert to MRT
- Remove from VCOD



Village Centers - Changes from Version 2.0

# Eliot T Stop

### Existing Zoning

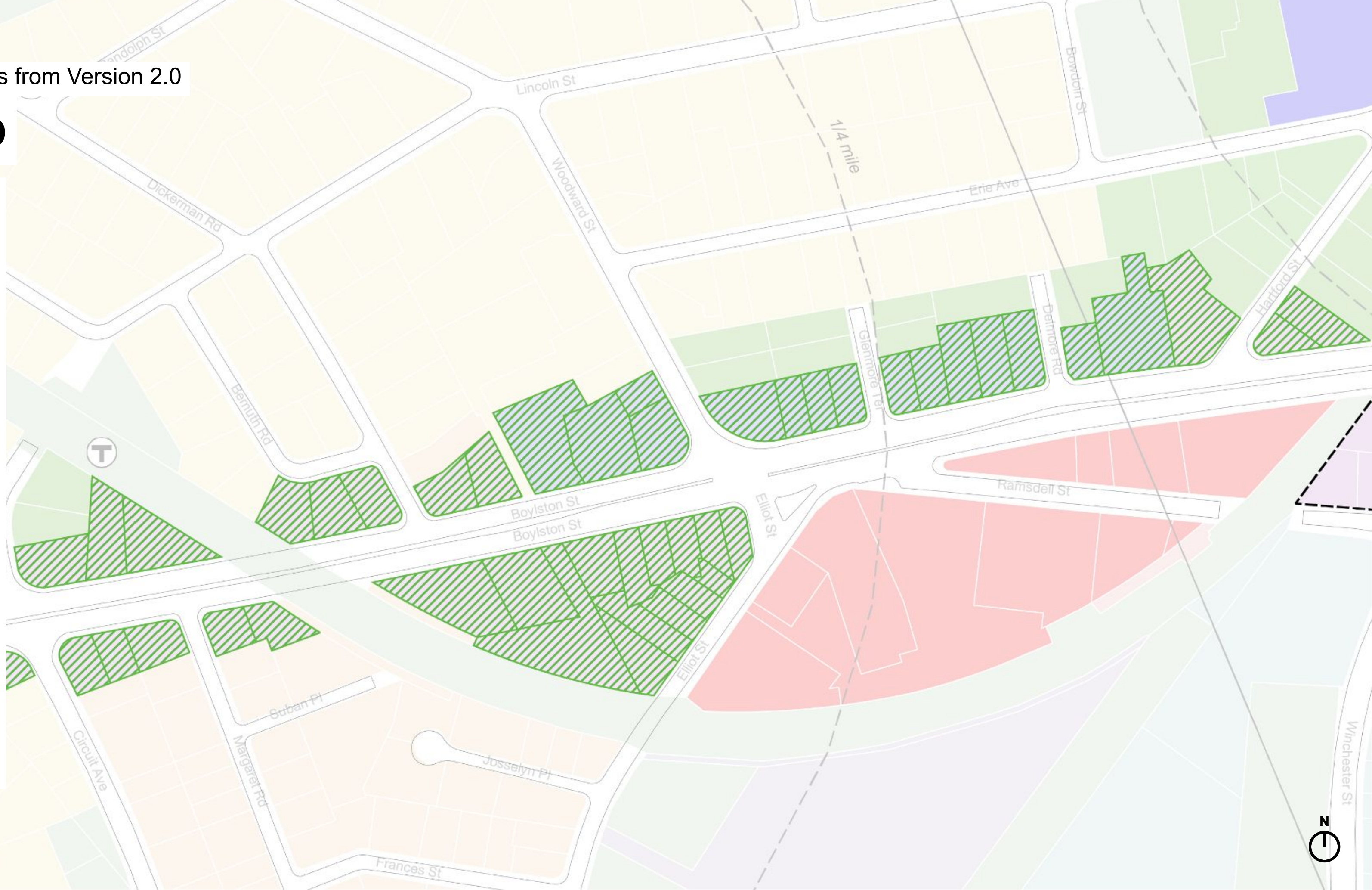
- Business (BU)
- Manufacturing (LM, M)
- Multi-Residence (MR)
- Single Residence (SR)
- Mixed Use (MU)
- Public Use & Open Space (PU, OS/R)

### Version 2.0 Zoning

- Village Center 3 (VC3)
- Village Center 2 (VC2)
- Village Center 1 (VC1)
- Multi-Residence Transit (MRT)
- Mixed-Use Required
- Historic District

### Version 3.0 Zoning

- Convert to VC3
- Convert to VC2
- Convert to MRT
- Remove from VCOD



Village Centers - Changes from Version 2.0

# Required Contiguous Area

### Existing Zoning

- Business (BU)
- Manufacturing (LM, M)
- Multi-Residence (MR)
- Single Residence (SR)
- Mixed Use (MU)
- Public Use & Open Space (PU, OS/R)

### Version 2.0 Zoning

- Village Center 3 (VC3)
- Village Center 2 (VC2)
- Village Center 1 (VC1)
- Multi-Residence Transit (MRT)
- Mixed-Use Required
- Historic District

### Version 3.0 Zoning

- Convert to VC3
- Convert to VC2
- Convert to MRT
- Remove from VCOD

