

The 2020-2027 Open Space and Recreation Plan is fully state-approved

Provides grant-eligibility
through July 2027

#178-20



Newton's Open Space and Recreation Plan
2020-2027

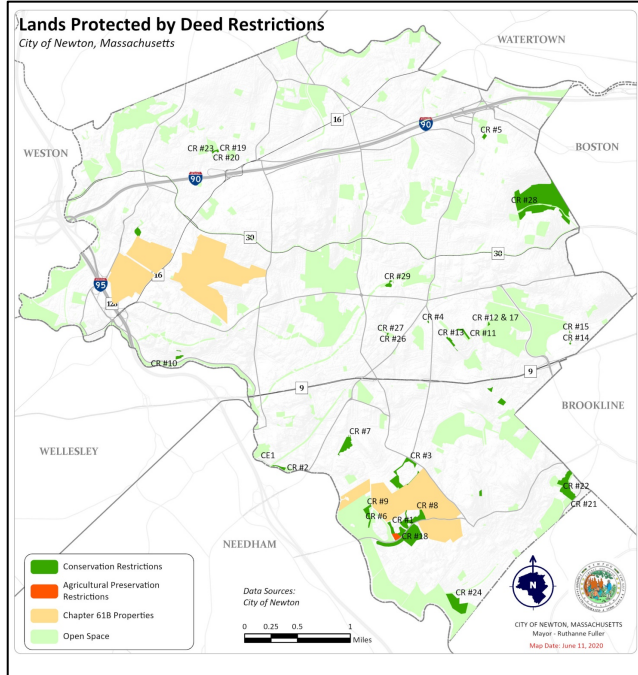


Improvements in this OSRP

#178-20

It has **fully updated data, tables, maps, graphs**

It has **120 specific action items**



Objective 2B: Improved City parks, playgrounds, and other recreational facilities.

Possible Synthetic Turf Projects

1. **Forte Park:** Upgrade existing natural turf fields to synthetic.
2. **Brown/Oak Hill Middle Schools:** Upgrade existing natural turf fields to synthetic and improve accessibility throughout.
3. **Albemarle Field/ Russell J. Halloran Athletic Complex:** Upgrade existing natural turf to synthetic at football, soccer and baseball fields.

It is being **implemented by a coordinated City team**

OSRP Implementation Committee Meeting Notes June 30, 2021 at 11:30

➤ **Action items are noted with arrow bullets and bold italics**

Members Present

Jimi Fairley
Nicole Banks
Luis Perez Demorizi
Jennifer Steel
Claire Rundelli

Members Absent

Barney Heath
Nicole Freedman
Jonathan Yeo

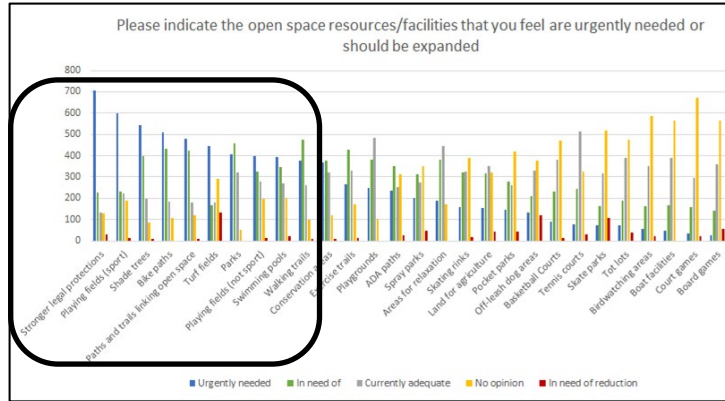
Acting Chair

Jennifer Steel

Improvements (cont'd)

#178-20

It had **robust public engagement**



It has a detailed **ADA facility**

Facility Name: Albemarle Field 'Russell J. Halloran Sports and Recreation Complex'		
Size (Ac): 24.9 acres		
Address: 250 Albemarle Road, Newtonville (Adjacent to Day Middle School and Horace Mann Elementary School)		
Ward: 2		
General Facility Notes: Accessible playground area (3-5-yr & 5-12-yr), raised planters & gazebo near Horace-Mann (future Newton Early Childhood); ballfield bleachers, tennis courts, basketball courts, field house on accessible route; Albemarle Rd. sidewalk runs the length of the park; accessible on-street parking near playground and pool; contiguous to wooded Avery Estate (not accessible).		
Site Furnishings	YES	
Benches & Tables		
Number of Benches	yes	There are 27 benches.
Number of Tables	yes	There are 5 picnic tables.
Located adjacent to accessible paths	yes	
Back and Arm Rests	yes	There are 9 benches with backs and arm rests, there are 15 benches with backs and 3 backless benches.
Stalls		
Located adjacent to accessible paths	no	
Trash Cans		
Located adjacent to accessible paths	yes	7 highly trash compactors; 7 highly recycling units; 1 trash/2 recycling by field house
Public Seating		
Located adjacent to accessible paths	yes	Gazebos and 3 picnic tables are located next to playground
Notes:		
Trails & Paths		
Surface (Asphalt, Concrete, Stone/dust, etc-naturally surfaced, Boardwalk, Bld-Ridge)	yes	A, C
Dimensions (width)	yes	Pathway is five feet wide, driveway is eight feet wide.
Stairs	N/A	
Signage for visually impaired	N/A	
Notes:		

It addresses **climate change**

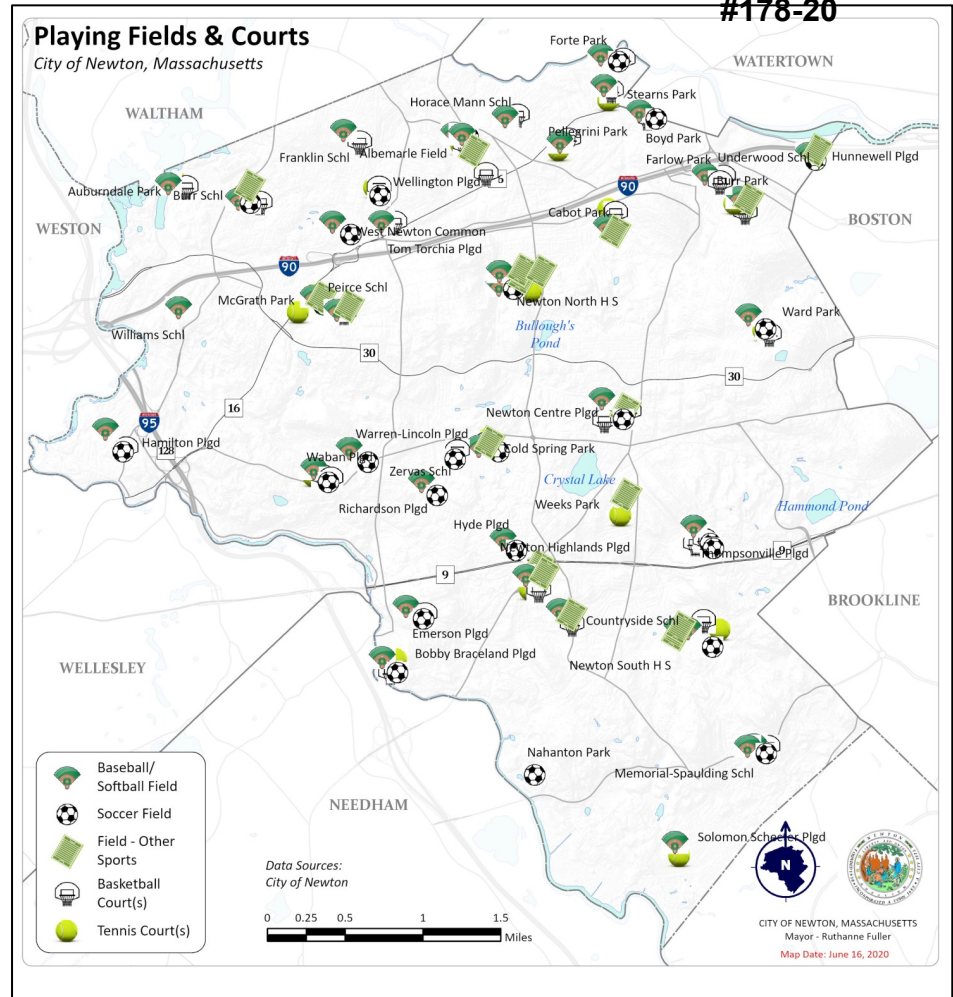
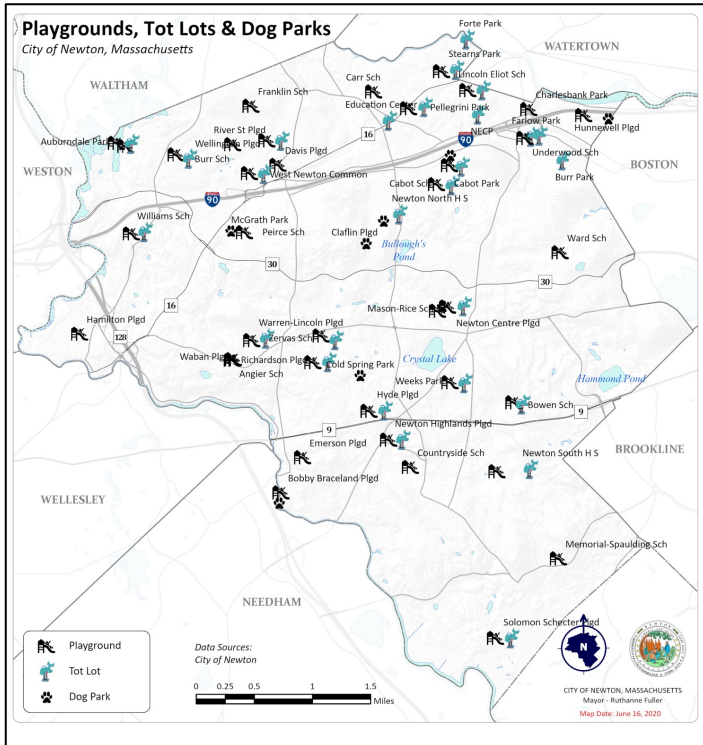


It includes a **trails database**

It reflects close **coordination among Parks, Rec. & Culture, Conservation, and the administration** to help ensure implementation

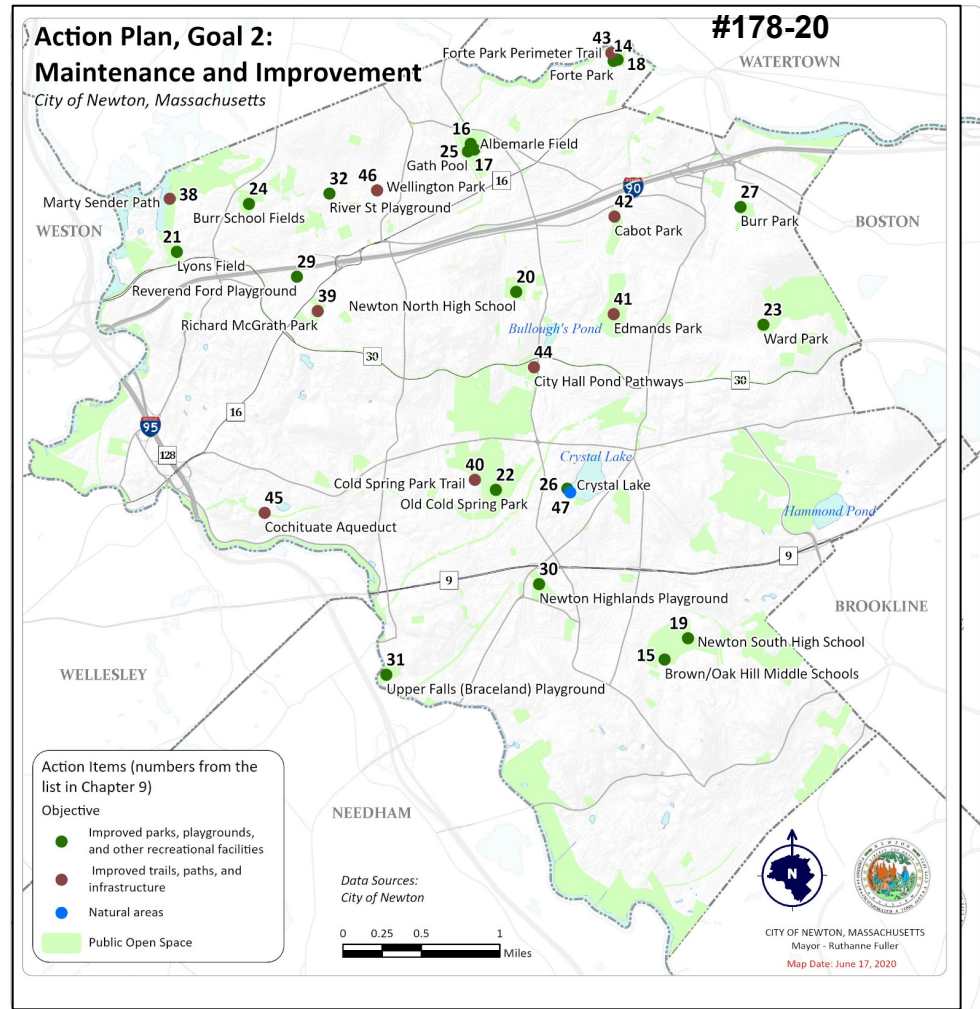
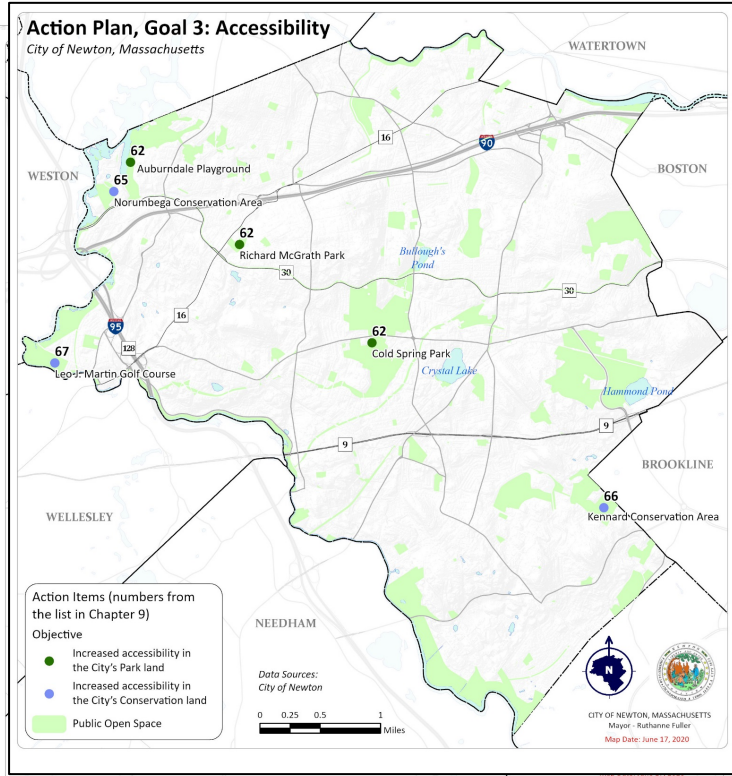
Improvements (cont'd)

It maps all recreational facilities



Improvements (cont'd)

It maps each action item



The OSRP Goals are Clear and Achievable

1. **Implementation:** Coordinated planning and adequate funding for the management and maintenance of the City's open space resources through the establishment of an implementation committee to prioritize actions and gather community support.
2. **Maintenance and Improvement:** Enhanced routine maintenance and capital improvement of the City's open space resources (e.g., fields and parks).
3. **Accessibility:** Maximized accessibility of as many of Newton's Outdoor Recreation Facilities and Natural Open Spaces as feasible.
4. **Minimized Gaps in the Availability of Open Space Resources:** New and improved open space resources in areas of greatest need (including, but not limited to Environmental Justice areas, urban heat islands, and areas lacking diversity in local open space resources).
5. **Connectivity:** Linked open space resources with accessible paths, bike lanes, and trails.
6. **Protection:** Protected and expanded open space resources.

